

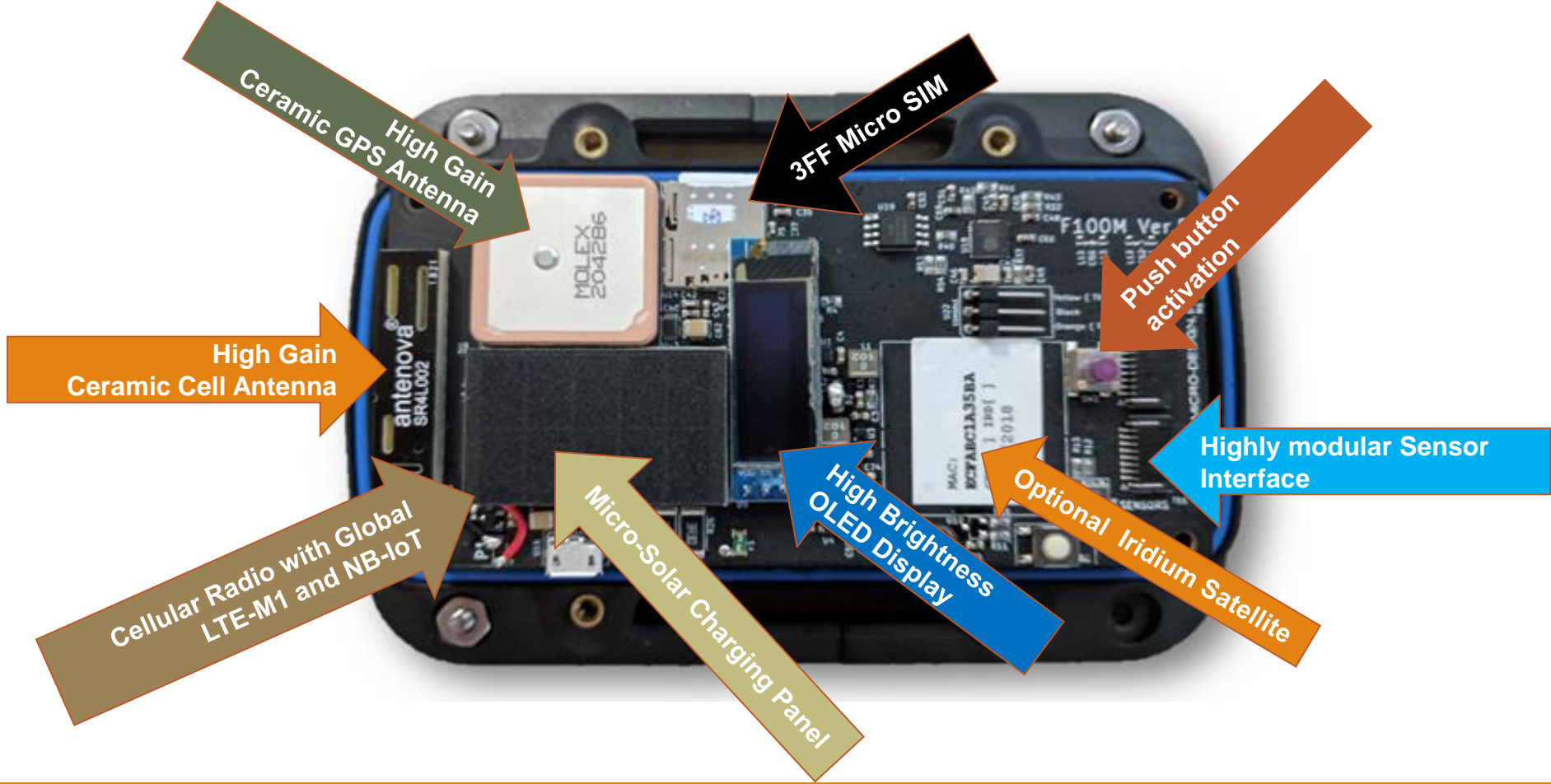
F100M Battery Change

REV. 12.19.20

F100M- Open View



Under the Hood of the F100M

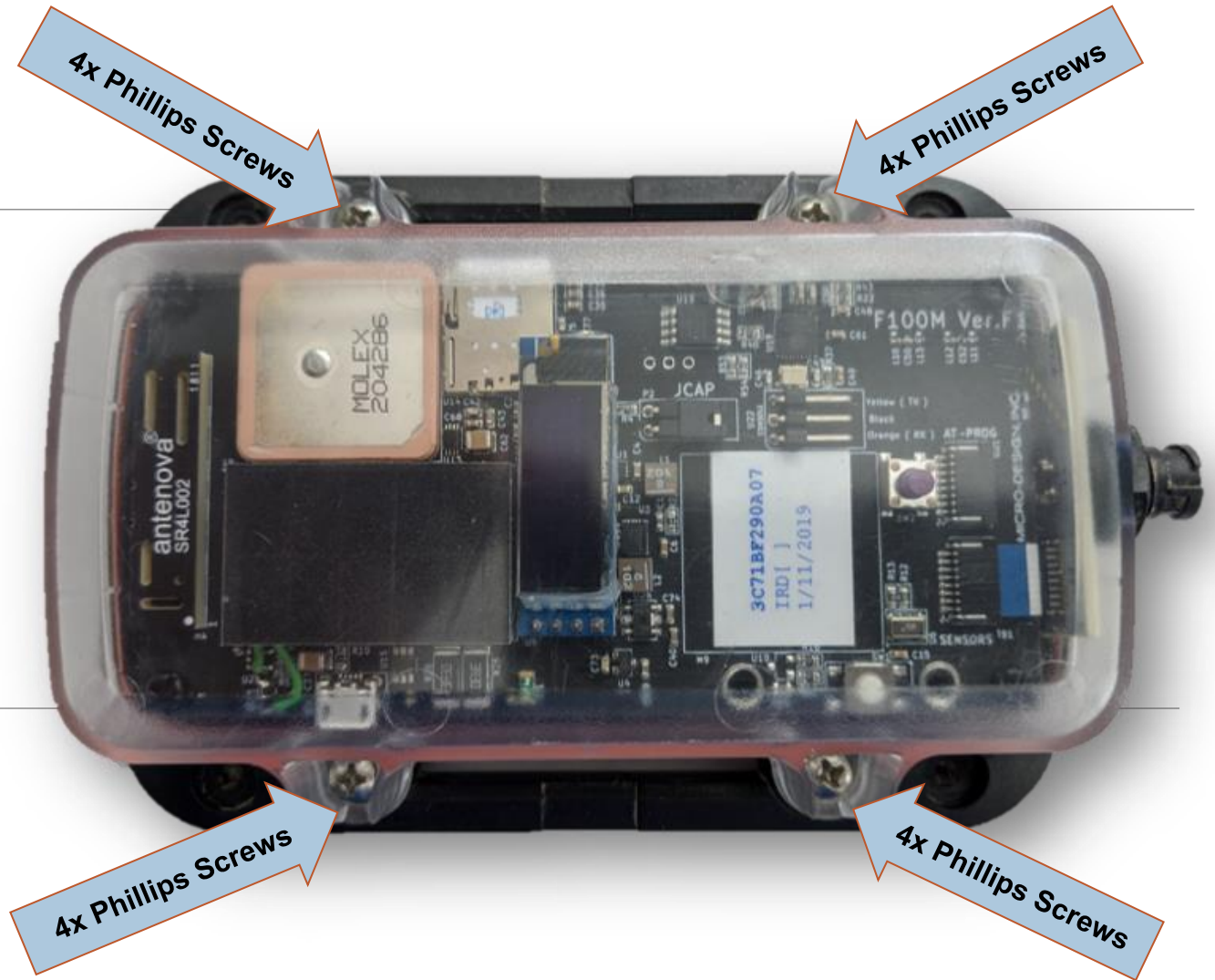


Step 1:

Remove the 4x Phillips screws retaining the lid to the base of the unit.

WARNING!

Do not use power tools while completing this process.



Step 2:

Remove the lid from the base starting at the top end opposite of the sensor port.

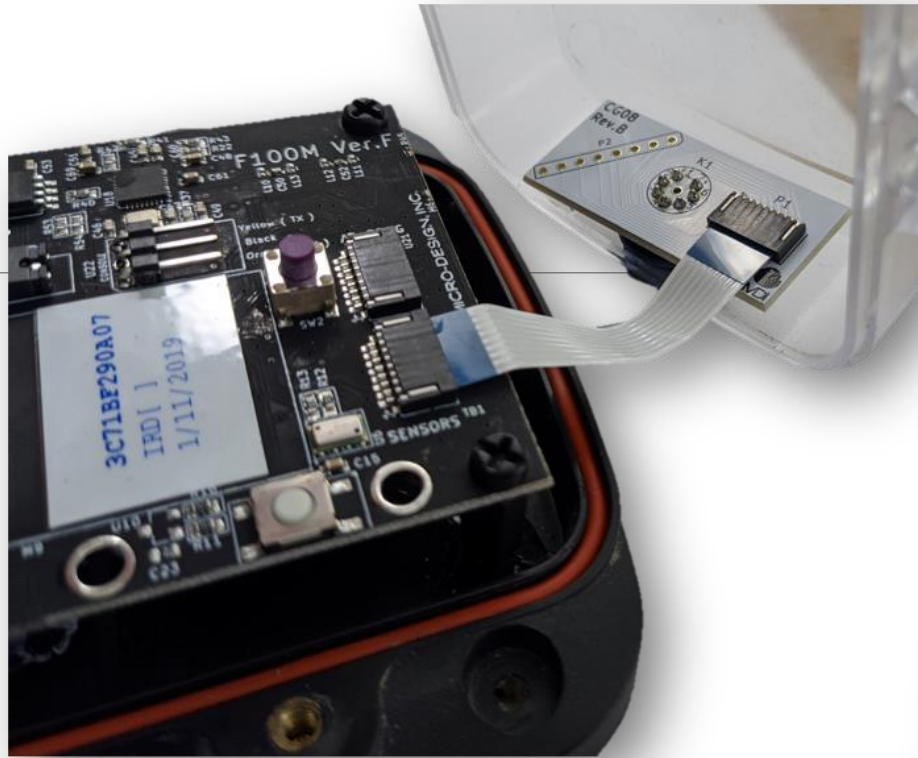
Be cautious of the sensor ribbon cable at the bottom of the unit connected to the lid and the board.



Step 2 Continued:

The sensor ribbon cable will disconnect from the board, or from the lid.

This is expected and will not damage the ribbon cable.



Step 3:

Remove the 4x nylon Phillips screws retaining the board to the base.

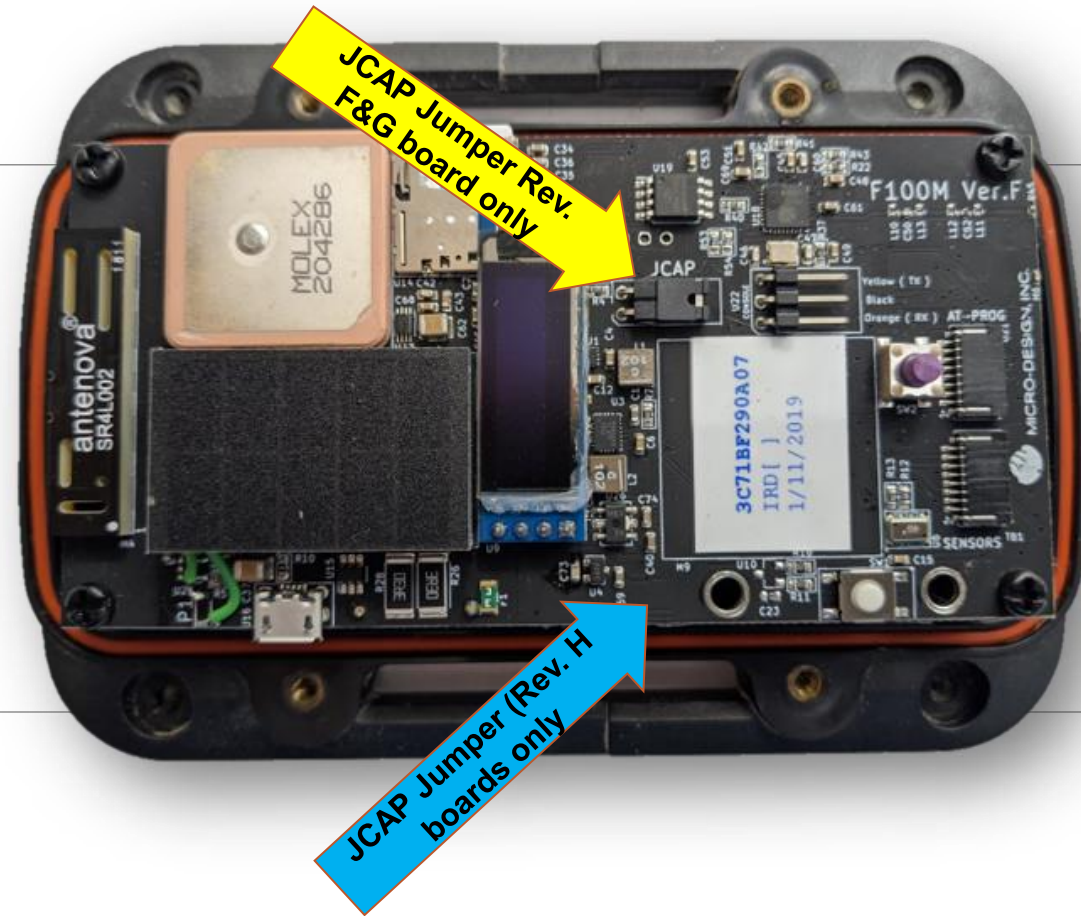


Step 4 Cont. :

Remove the jumper covering the JCAP pins(solar capacitor).

Note: The JCAP jumper may be located on the side of the board depending on your board revision.

The jumper simply slides off. Set it aside to reinstall in step 6.



Step 5:

Remove the logic board and turn it over to expose the battery holder.

***Note:** LevelCon highly recommends only utilizing 3x AA Energizer Ultimate Lithium batteries.



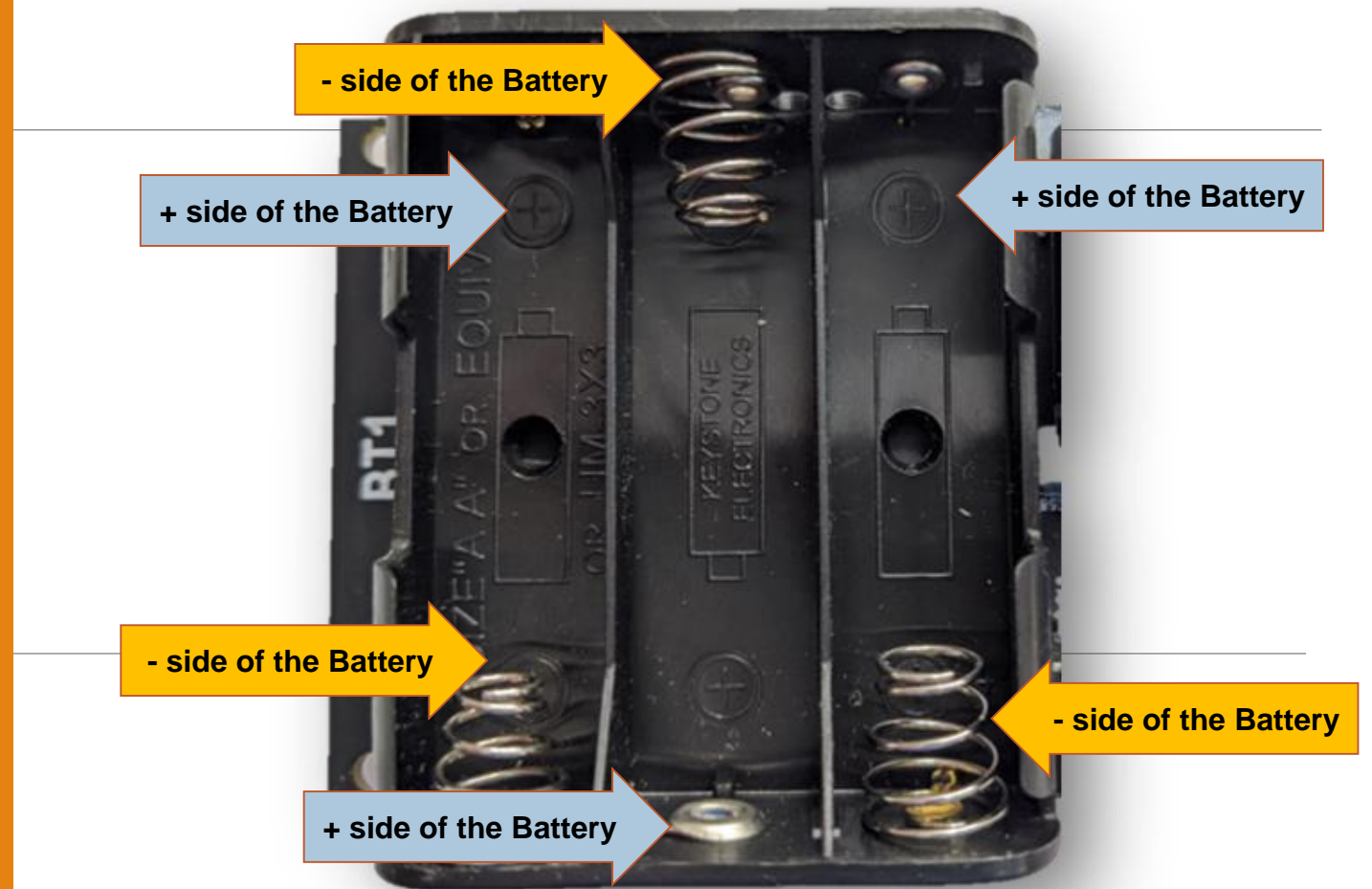
Step 6:

Remove the 3x AA batteries from the battery holder.

Reinstall the JCAP jumper before installing the new batteries.

Insert the replacement batteries, paying close attention to the proper orientation.

***Note:** LevelCon highly recommends only utilizing 3x Energizer Ultimate Lithium batteries.



Step 7:

Replace the logic board back on the base and reinstall the 4x nylon screws.

***Note:** the nylon screws are to be snug, but not over torqued.

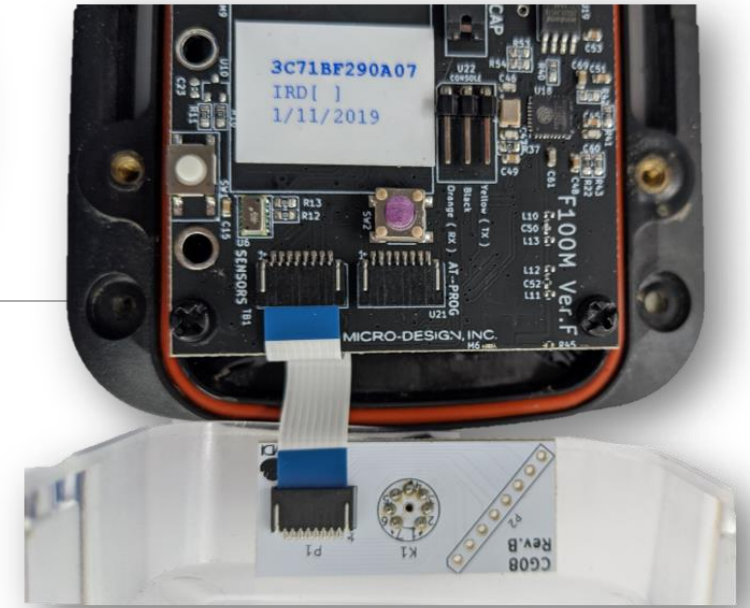
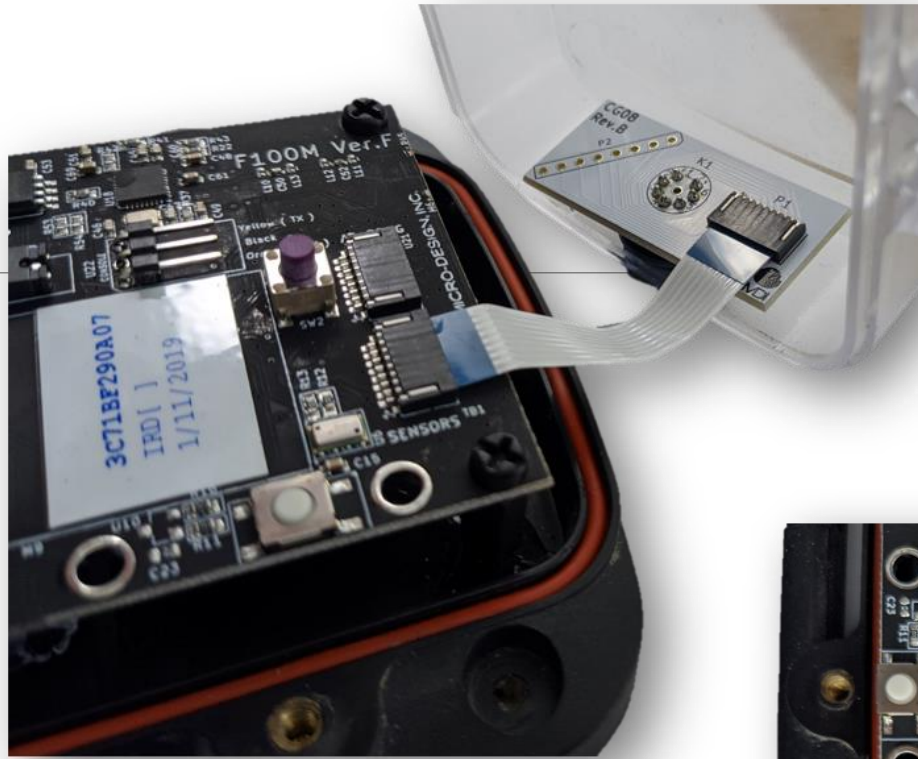


Step 8:

Reinstall the lid to the unit.
Re-insert the sensor ribbon cable in the proper sensor port.

Be sure not to pinch the ribbon cable between the lid and the seal of the base when reinstalling the lid.

* Depending on the revision of your logic board, there may only be one port designated for the sensor ribbon cable.



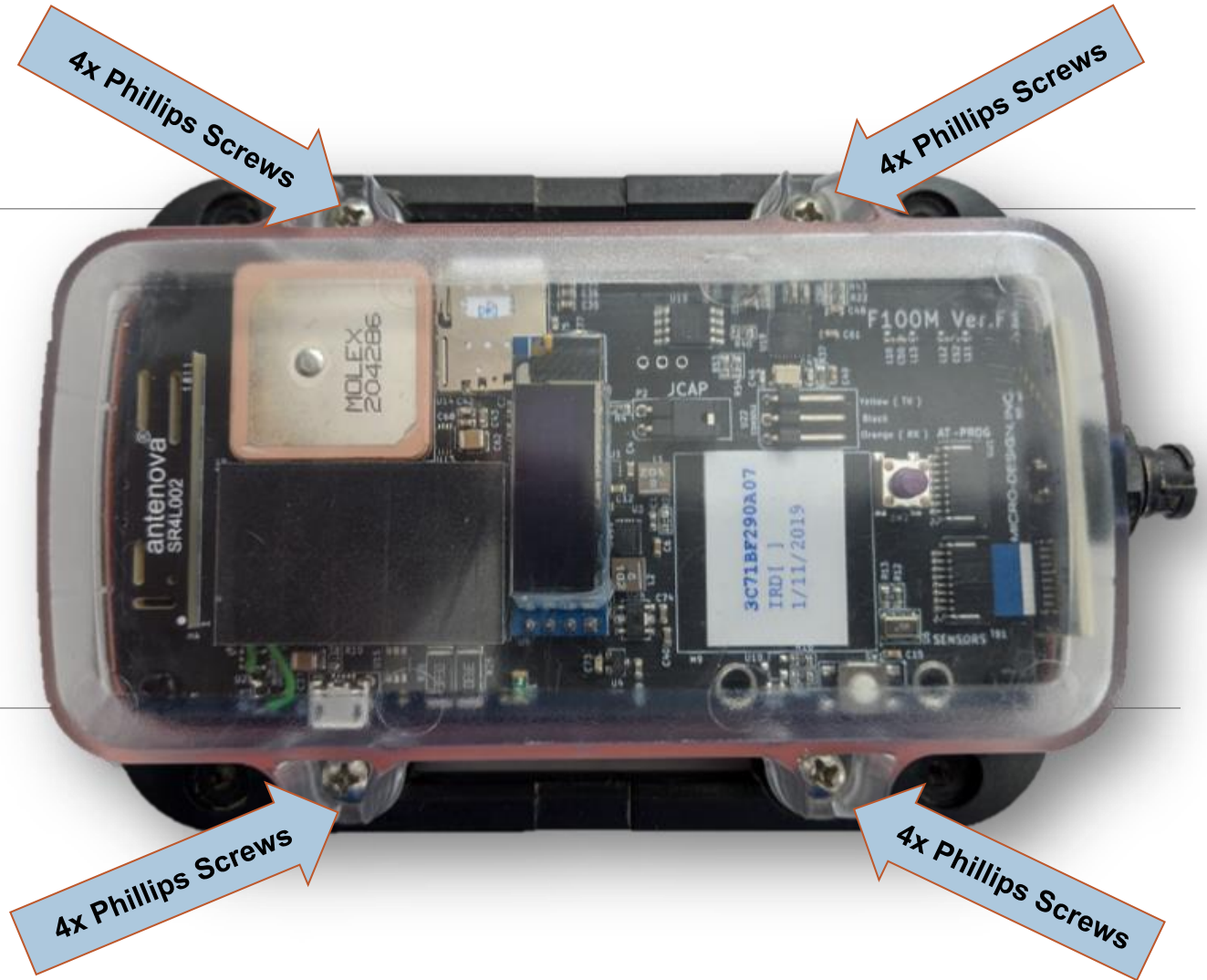
Step 9:

Reinstall the 4x metal screws, securing the lid to the base.

The screws should be hand tightened.

WARNING!

Do not use power tools while completing this process.



Step 10:

Press the power button icon on the label of the lid, engaging the button below the lid to ensure there is good contact between the lid and the button.

The LCD of your monitor will illuminate and display the reporting process.

