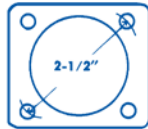




## NH3 Float Gauges

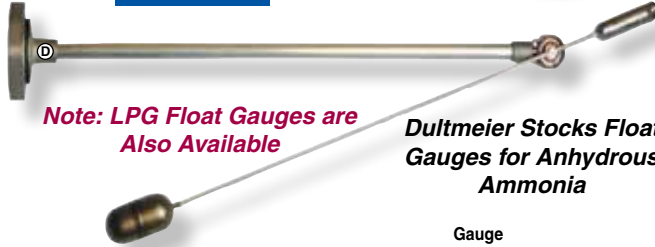


"SR" Head



"VISIBLE" SENIOR

**TAYLOR** "VISIBLE"



**Note: LPG Float Gauges are Also Available**

**Dultmeier Stocks Float Gauges for Anhydrous Ammonia**

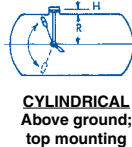
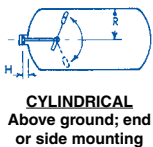
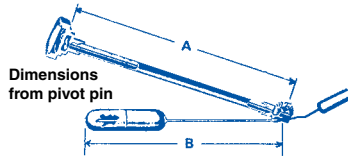
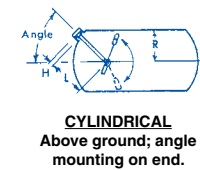
Part No.	Tank Diameter	Mount	Riser "H"	Gauge DIMENSIONS	
				"A"	"B"
ST AA130A	24"	Top - "SR"	1/2"	12.5"	11.0"
ST AA160A	30"	Top - "SR"	1/2"	15.5"	14.0"
ST AA194A	37"	Top - "SR"	1/2"	19.5"	17.5"
ST AA214E	41"	Top - "SR"	1/2"	21.5"	19.5"
ST AA240A	46"	Top - "SR"	1/2"	24.0"	22.0"
ST AA250A	48"	Top - "SR"	1/2"	25.0"	23.0"
ST A6480-13	41"	Top - "SR"	* For "N-SERVE"		
ST A6480-12	46"	Top - "SR"	* For "N-SERVE"		
ST AC130A	24"	45-Degree-"SR"	1/2"	12.5"	11.0"
ST AC194A	37"	45-Degree-"SR"	1/2"	19.5"	17.5"
ST AC214B	41"	45-Degree-"SR"	1/2"	21.5"	19.5"
ST AC240A	46"	45-Degree-"SR"	1/2"	24.0"	22.0"
ST AD140A	41"	*End - "SR"	1/2"	14.0"	19.5"
ST AD210A	41"	#End - "SR"	1/2"	21.0"	19.5"

\* Use AD140A in tanks with flat head.

# Use AD210A in tanks with round hemispherical head

**Jr. Heads (2" to 3-1/2") Also Available**

## Float Gauge Mounting Positions



### How to Order

**TYPE OF SERVICE** - LP-Gas, Anhydrous Ammonia (NH3), Fertilizer Solutions, Liquid Oxygen or other materials.

**GAUGE SIZE** - (or Head Type) - Specify Junior Size, Senior Size, Visible "4" or Master Gauge Model.

**TYPE MOUNTING** - Top, Side, End or Angle, if Angle (Specify angle above horizontal center line).

**GIVE FOLLOWING DIMENSIONS:**

**H** - distance from outside of container to base of gauge head.

**D** - inside diameter of tank or cylinder.

**DIAL NUMBER** of old gauge if available.

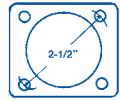
### Made to Order Gauges

**Factory Shipment:** Allow fabrication and transit time on all orders for float gauges shipped FOB: Dallas, Texas. On "VISIBLE" float gauges specify for LPG or a service. Include all ordering information needed for tank diameters up through 52".

## Replacement Dial Assemblies for NH3 & LPG



2208CV



These "Visible" 2" dials are for Taylor gauges manufactured prior to 1985. Easily installed by removing the original crystal, pointer and pointer pin.

The 2208CV dial fits Taylor gauges after 1985.



**Criterion**

Phillips Screw Mounting

DIAL: 5-2SR "Senior"  
5-40JR "Junior"



**Criterion**

3181-S18-40 Kit for Junior Head  
3180-S18-2 Kit for Senior Head

Criterion currently use the 5-2SR and 5-40JR dials. Older gauges will require the 3180 and 3181 kits which include a back mounting flange and a tube of epoxy glue.

Part No.	Dial Kits	Product	Size
CN 5-2SR	Criterion	NH3	"SR"
CN 5-40JR	Criterion	NH3	"JR"
CN 3180-S18-2	Criterion	NH3	"SR"
CN 3181-S18-40	Criterion	NH3	"JR"
ST NH3-2SR	Visible	NH3	"SR"
ST 2208CV	New Style (after 1985)	NH3	"SR"
ST LPG-2JR	Visible	LPG	"JR"

**GAUGE 2-1/2" (SENIOR)  
GASKETS 2-1/32" (JUNIOR)**

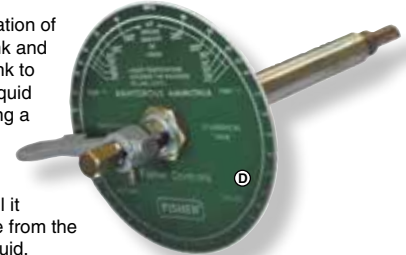


ST SR	Gauge Gasket-Senior 2-1/2"	"SR"
ST JR	Gauge Gasket-Junior 2-1/32"	"JR"
ST 40-414	Fillister Head Screw for "JR"	"JR"
ST 40-415	Fillister Head Screw for "SR"	"SR"



## Rotary Gauges

These units give visual indication of the amount of NH3 in the tank and are also used in filling the tank to the correct liquid level. The liquid level is determined by opening a small bleed orifice when the tube is in the vaporspace of the tank. Moving the pointer causes the tube to move until it contacts liquid and discharge from the orifice turns from vapor to liquid.



Tank Connection	Tank Diameter	With NH3 Dial Part No.	With LPG Dial Part No.
1" MPT	Up to 68"	ST J31A-1	ST J31L1
1" MPT	69" to 92"	ST J31A-2	ST J31L-2
1" MPT	93" to 108"	ST J31A-3	ST J31L3
1" MPT	109" to 140"	ST J31A-3L	ST J31L-3L

**For 1200 Gal. & Less, Order Dial J31S-1 & Specify NH3 or LPG Service.**

## Tank Thermometers



**Tank Thermometers** are suitable for LP gas and NH<sub>3</sub> service. Dust-proof and moisture-proof. Accurate to within 1% of scale range. J-701 Industrial thermometer has a 2" dial with 1/2" male pipe thread and 6" stem (4" stem available).

Made of stainless steel for truck tanks and small systems. Accurate and sturdy. Designed for NH3.

Type No.	Container Connection	Construction Material	Scale Range	Dial Size	Stem Length
J701	1/2" MNPT	Steel	-40°F to 160°F. & -40° to 70°C.	2"	6"

**Part No.**  
ST J701 Container Thermometer

**Stem Length**  
6"